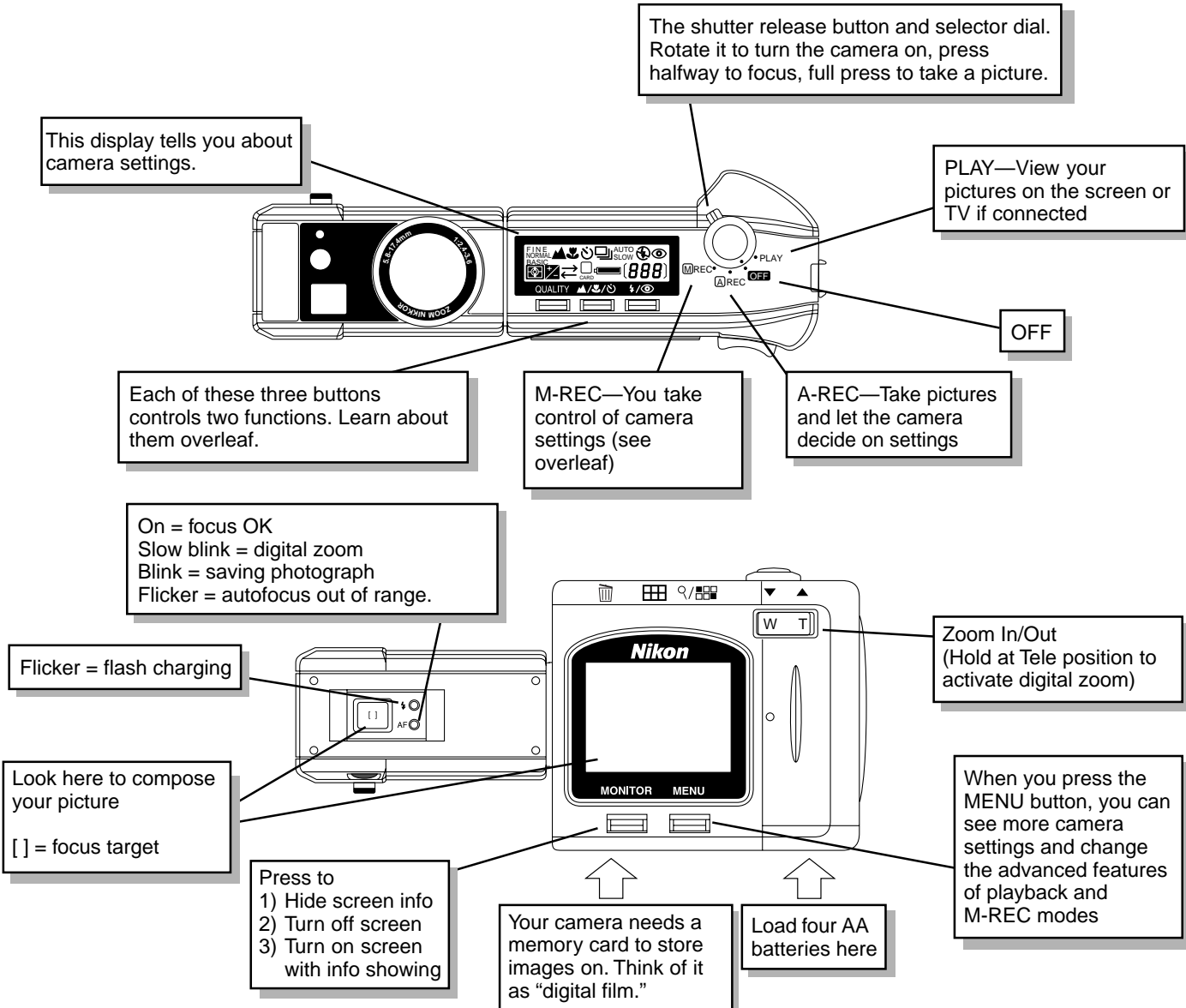


Nikon Digital Camera COOLPIX 900

Fast Track Guide

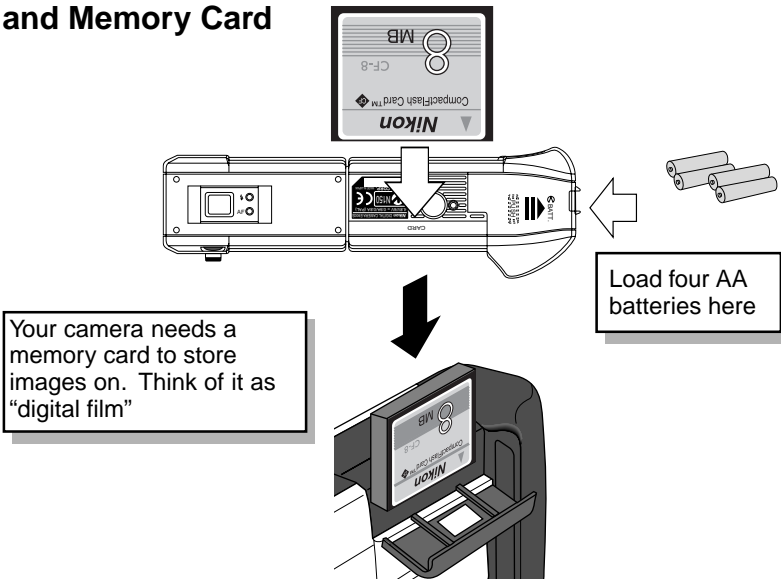
Your Camera and You

The COOLPIX 900 Digital Camera incorporates many controls and functions that will be familiar to users of traditional film cameras. For example, you will find that the COOLPIX 900 features a zoom lens, exposure metering control, autofocus and a flash. As a digital camera, the COOLPIX 900 stores images on a memory card, instead of film, and can be connected to a computer. For the experienced photographer there is a new set of controls and concepts to master as the possibilities of digital imaging bring such features as rapid-fire shooting, compensation for indoor and outdoor lighting, 2x digital zoom, selective deletion of pictures, and playback through a TV set. Whether you are an experienced photographer or a novice please use this guide if you feel confident to start using your digital camera with a minimum of instruction.

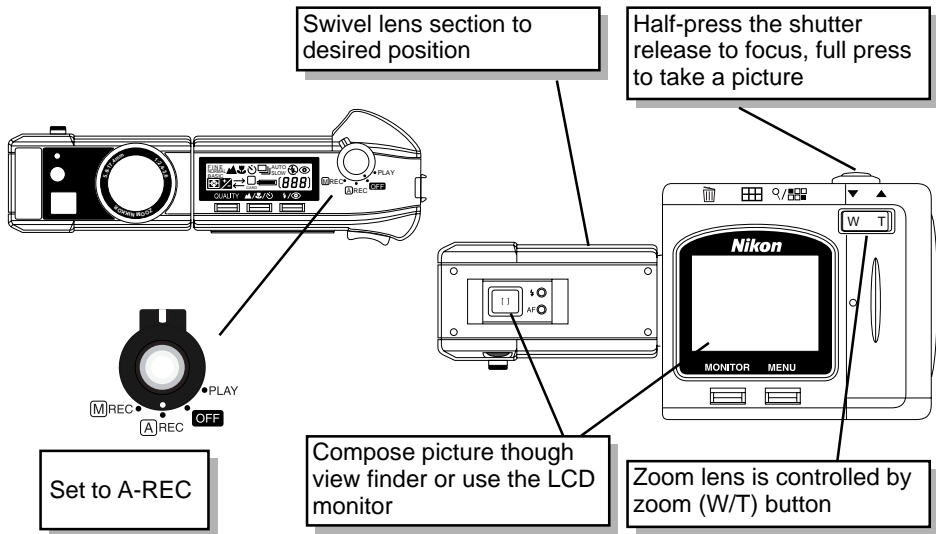


First Steps

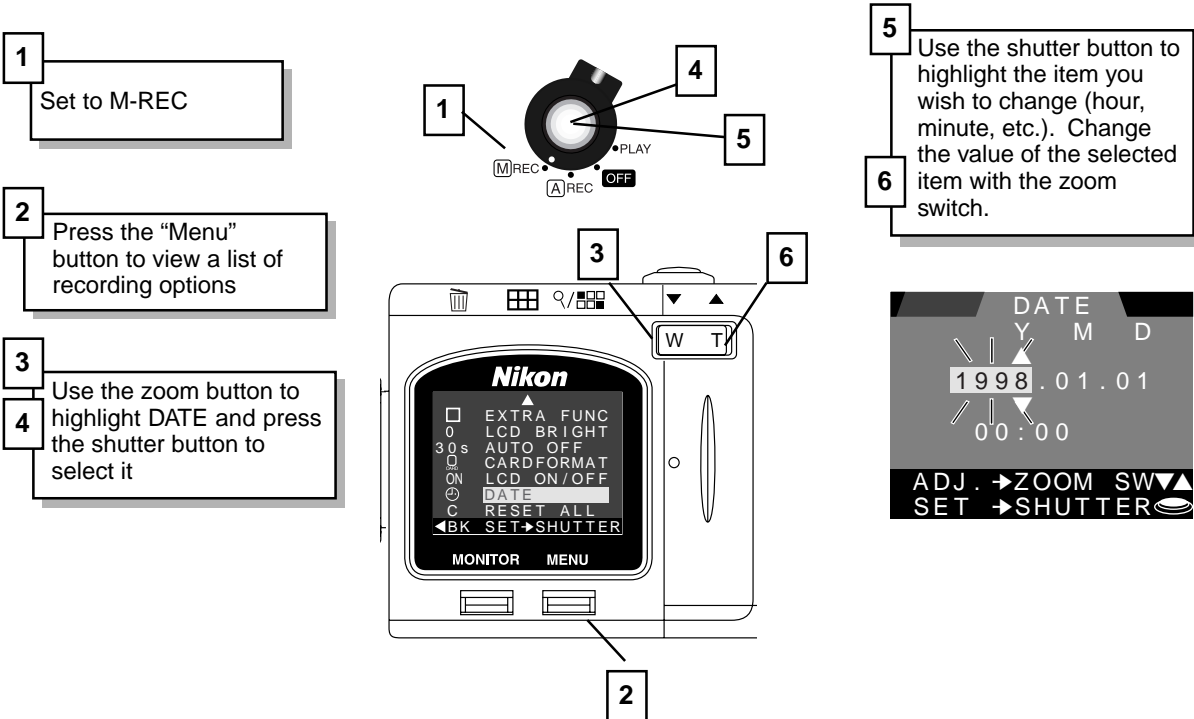
Inserting Batteries and Memory Card



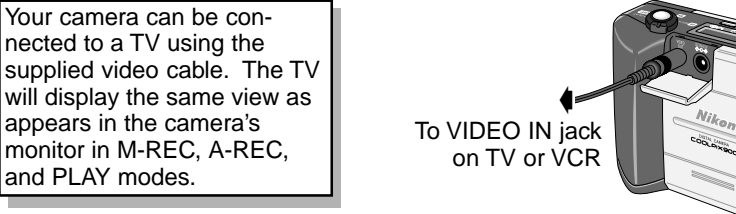
Taking a Picture



Setting the Date and Time

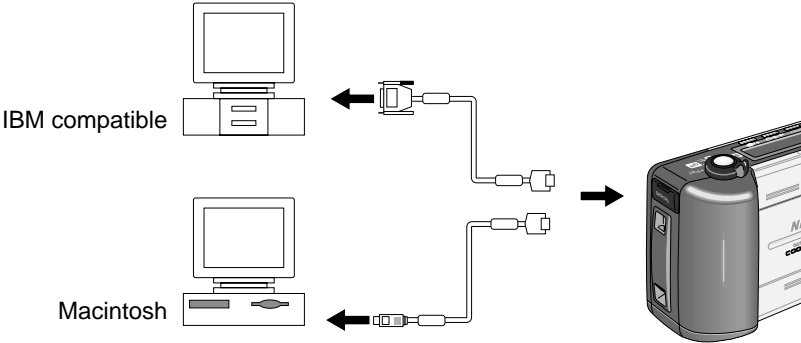


Viewing Your Pictures on TV



Connecting to a Computer

Your camera can be connected to a computer running MacOS or Windows 95/NT using the appropriate serial cable (separate cables are provided for Macintosh computers and PCs). You will need the supplied *Nikon View* software. Your camera will function like an additional disk drive.



Getting to Know Your Camera

The Camera Control Panel Display

1) Image quality:
Fine (compression ratio 1:4)
Normal (1:8)
Basic (1:16)

2) Focus mode

3) Self Timer

4) Continuous

5) Flash setting

6) Red-Eye Reduction (for portraits)

7) Number of exposures remaining

8) Metering

9) Exposure compensation

10) Serial cable connected

11) Memory card in place?

12) Battery power indicator

Camera Control Panel Settings

Flash setting: Auto, Flash Cancel, Auto with Red-Eye Reduction, Anytime Flash, SLOW Slow Sync, AUTO

Focus mode: Auto (50cm–30m), Infinity (30m+), Macro (8–50cm), Timer 10s, Auto

Image Quality: FINE, NORMAL, BASIC, FINE

Fewer pictures, higher quality ↔ More pictures, lower quality

Red-eye reduction makes the subject's eyes react to light before the picture is taken. A flash setting of “slow synchronized” combines flash with long exposure for adding auto-triggered flash lighting

Manual (M-REC) Mode Controls

1 Select M-REC

2 Use the shutter button to select a highlighted menu item

3 Use the zoom button to highlight different menu items

4 Use this button to hide and reveal the manual mode menu

The manual mode (shooting) menu allows access to camera settings not accessible in A-REC mode. To make changes to a given feature, activate the menu with the MENU button and use the zoom switch to highlight the item. Press the shutter button to display the options available for the selected item.

◀BK SHOOTING

±0 EXP. +/–

METERING

CONTINUOUS

A WHITE BAL

0 IMG ADJUST

LANGUAGE

SET→SHUTTER

EXTRA FUNC

0 LCD BRIGHT

30 s AUTO OFF

ON CARDFORMAT

ON LCD ON/OFF

DATE

C RESET ALL

◀BK SET→SHUTTER

Exposure: Use exposure compensation to cope with situations in which autoexposure would make the picture too dark or too bright. Choose a value from -2.0→+2.0 EV.

Metering: Choose from one of three methods for determining optimum exposure. *Matrix* metering analyzes the entire picture. *Center-weighted* metering gives more consideration to the center of the picture. *Spot* metering measures lighting at the center of the picture only.

Continuous: The camera behaves like a motor-driven film camera, taking up to ten pictures at about two frames per second at a resolution of 640 × 480 dots (VGA mode) or one frame every four seconds at full resolution.

White Balance: Different lighting conditions can cause the colors in a photograph to change. This feature compensates for a variety of indoor and daylight lighting conditions.

Image Adjustment: Adjust image brightness and contrast.

Language: Choose a language for the camera's menus and messages from English, French, German, and Japanese.

Extra Functions (check the desired functions and select **EXECUTE**):

- VGA:** Store four times as many pictures by reducing the size of photographs to 640 × 480 dots (the quality indicator in the control panel will flash while the camera is in VGA mode)
- Black and white:** Take monochrome (grayscale) photographs
- Digital tele:** 2× digital zoom
- Fisheye/Wideadapter:** These settings should be used in combination with the fish-eye or wide-angle lens converters (available separately)
- AE-lock:** Lock autoexposure when creating a series of photographs for a panorama or VRML image

LCD Brightness: Adjust the brightness of the color LCD monitor's backlight.

Auto off: To save batteries, the monitor will switch off after the selected time (A-REC and M-REC modes only). Press the shutter release to reactivate the camera.

Card format: Format compact flash-memory cards for use in the COOLPIX 900 (note that this erases all pictures on the card).

LCD ON/OFF: Set the LCD to turn on or off at start-up (off to save power).

Date: Set the time and date. This setting determines the time stamp on your pictures.

Reset all: Restore factory default settings.

Playback Features

Viewing Pictures

Set to PLAY (play-back mode)

Use the zoom switch to browse through the pictures

Delete current picture

Zoom current picture in (2×)

Show nine pictures (use the zoom switch to highlight a picture, then press the shutter release to display it at full size)

The Playback Menu

The playback menu allows a number of useful display options to be selected and altered. With the selector dial turned to PLAY, activate the menu with the MENU button. Use the zoom switch to highlight the desired item, then press the shutter button to view a list of options for the item.

◀BK PLAY BACK

THUMBNAIL

DELETE

SLIDESHOW

PROTECT

HIDE IMAGE

LANGUAGE

SET→SHUTTER

0 LCD BRIGHT

30 s AUTO OFF

ON CARDFORMAT

ON DATE

◀BK SET→SHUTTER

Thumbnail: Display the last nine pictures taken by the camera. Use the zoom switch to select a picture and press the shutter button to display it full size. The selected picture can be deleted by pressing the button.

Delete: Delete selected pictures or all items in memory. To delete selected pictures, highlight **SELECTED** in the delete menu and press the shutter button. Using the zoom switch, highlight any of the images to be deleted and press the button. After selecting the last of the images to be deleted, press the shutter button to delete all selected images.

Slideshow: All pictures in memory are displayed one after the other in the order taken. Choosing **SLIDESHOW** from the playback menu displays a start screen. Highlight **START** with the zoom switch and press the shutter release to start the slideshow. If desired, the time each image is displayed can be altered by highlighting **FRAME INTVL** with the zoom switch and pressing the shutter release to display a menu of interval settings. Use the zoom switch and shutter release to select and confirm the desired timing.

Protect: This item is used to protect chosen pictures from deletion. Choosing **PROTECT** from the playback menu displays the last six pictures in miniature. Use the zoom switch to scroll through the pictures in the camera. Press the button to protect the currently highlighted picture. After selecting the last of the images to be protected, press the shutter button to return to the playback menu. Protected pictures are marked with a icon when viewed on the display and have read-only status when viewed from a computer.

Hide: This item is used to conceal chosen pictures during playback and slide shows. Choosing **HIDE** from the playback menu displays the last six pictures in miniature. Use the zoom switch to scroll through the pictures in the camera. Press the button to select the currently highlighted picture for concealment. After selecting the last of the images to be hidden, press the shutter button to return to the playback menu. Hidden pictures can only be seen from the hide-image menu, where they are marked with a icon. They are not visible on a computer unless the “show hidden files” option is chosen. To display a hidden picture once more, return to the hide menu, highlight the picture, and press the button to remove the picture's hidden status.

Language: Choose a language for the camera's menus and messages from English, French, German, and Japanese.

LCD Brightness: Adjust the brightness of the color LCD monitor's backlight.

Auto Off: When in playback mode, the camera will switch off after the selected time to save batteries. The camera can be reactivated by pressing the shutter release.

Card format: Format compact flash-memory cards for use in the COOLPIX 900 (note that this erases all pictures on the card).

Date: Set the time and date. This setting determines the time stamp on your pictures.